

# RCCR Rail Co.

Investing in Tomorrow's Infrastructure

# Developments in Texas Comparable to RCR Rail Parks

## Taylor Megasite (Williamson County)

Union Pacific & BNSF  
1248 acres

## TGS Cedar Port Industrial Park (Chambers County)

TGS is a large multi-rail served park. It's location east of Houston is a major negative in comparison to Hempstead's location for the Texas market.  
+10,000 acres

## Alliance Texas Development (D/FW Metroplex)

Alliance does not have direct rail service to customer sites.  
It is BNSF only.  
+18,000 acres





# The Start of Our Story

## RCR Hempstead Rail Park





# RCR Hempstead Rail Park Historical Property Aerial View





# Groundbreaking Fall of 2018

## RCR Hempstead Rail Park





# RCR Hempstead Rail Park - April 2, 2019





# RCR Hempstead Rail Park – January 2021





# RCR Hempstead Rail Park – November 2024





# RCR Hempstead Rail Park – Mar 2025





# RCR Hempstead Rail Park Site Plan



## RCR HEMPSTEAD RAIL, L.P. HEMPSTEAD FACILITY HEMPSTEAD, WALLER COUNTY, TEXAS



20' UTILITY EASEMENT  
(PROPOSED SEWER / WATER / GAS SERVICES)

20' ELECTRIC EASEMENT

TX-HWY 6

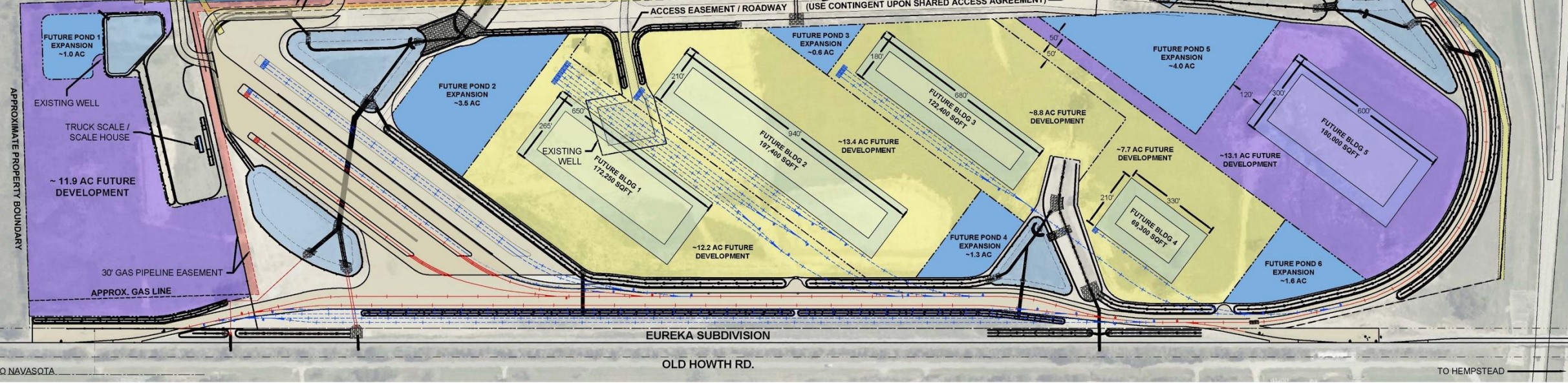
APPROXIMATE PROPERTY BOUNDARY

(USE CONTINGENT UPON SHARED ACCESS AGREEMENT)

ACCESS EASEMENT / ROADWAY

ELECTRIC EASEMENT  
(WIDTH VARIES)

US-HWY 290



TO NAVASOTA

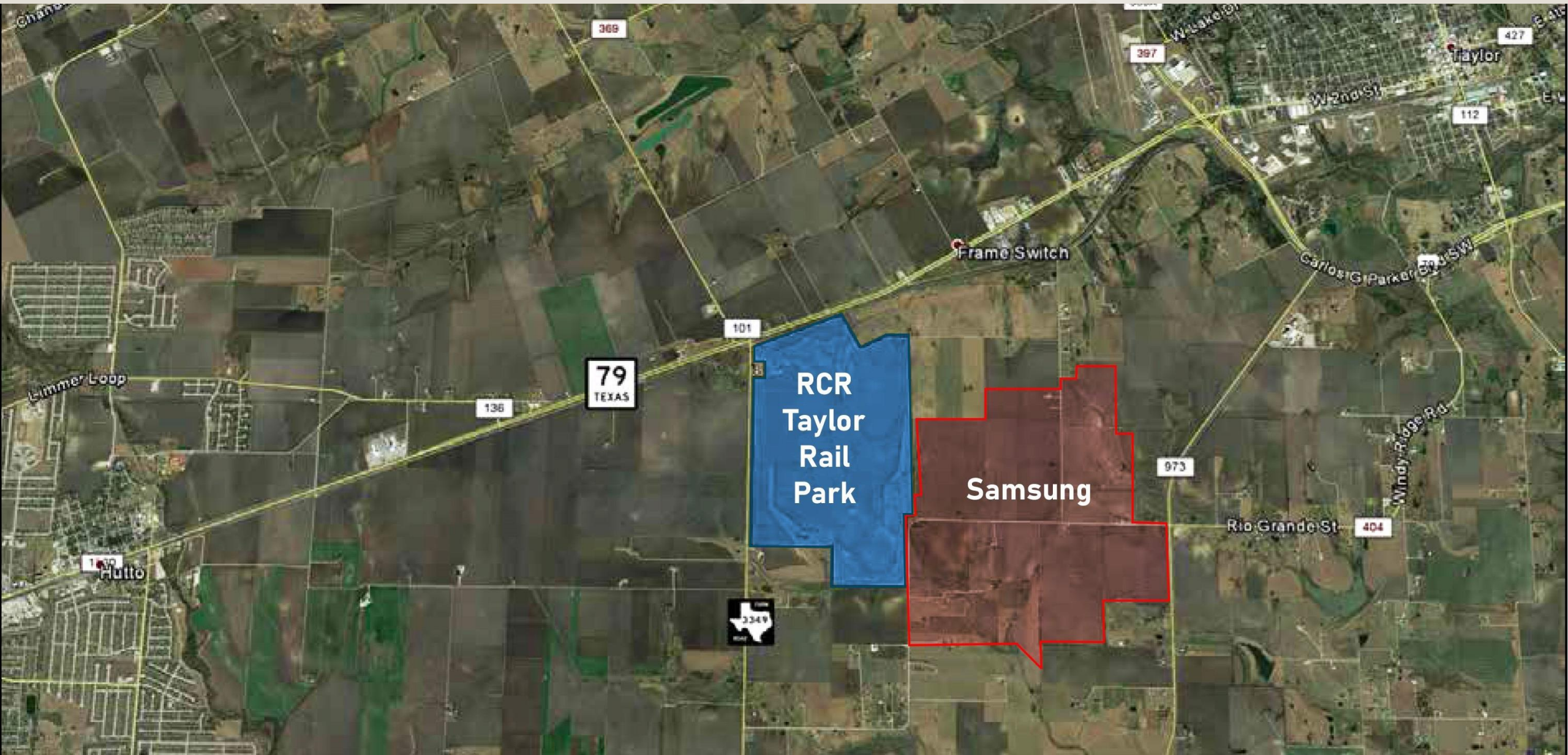
EUREKA SUBDIVISION

OLD HOWTH RD.

TO HEMPSTEAD



# RCR Location in Taylor, TX





# Purchased July 2018

## RCR Taylor Rail Park





# RCCR Taylor Rail Park – March 2021





# Initial Development of RCR Taylor Rail Park





# RCR Taylor Rail Park – May 2023





# Development of Auto Ramp RCR Taylor Rail Park





# RCR Taylor Rail Park – December 2023





# Development of TaylorPort1 a Partners Development Building at RCR Taylor Rail Park





# RJR Taylor Rail Park – September 2024



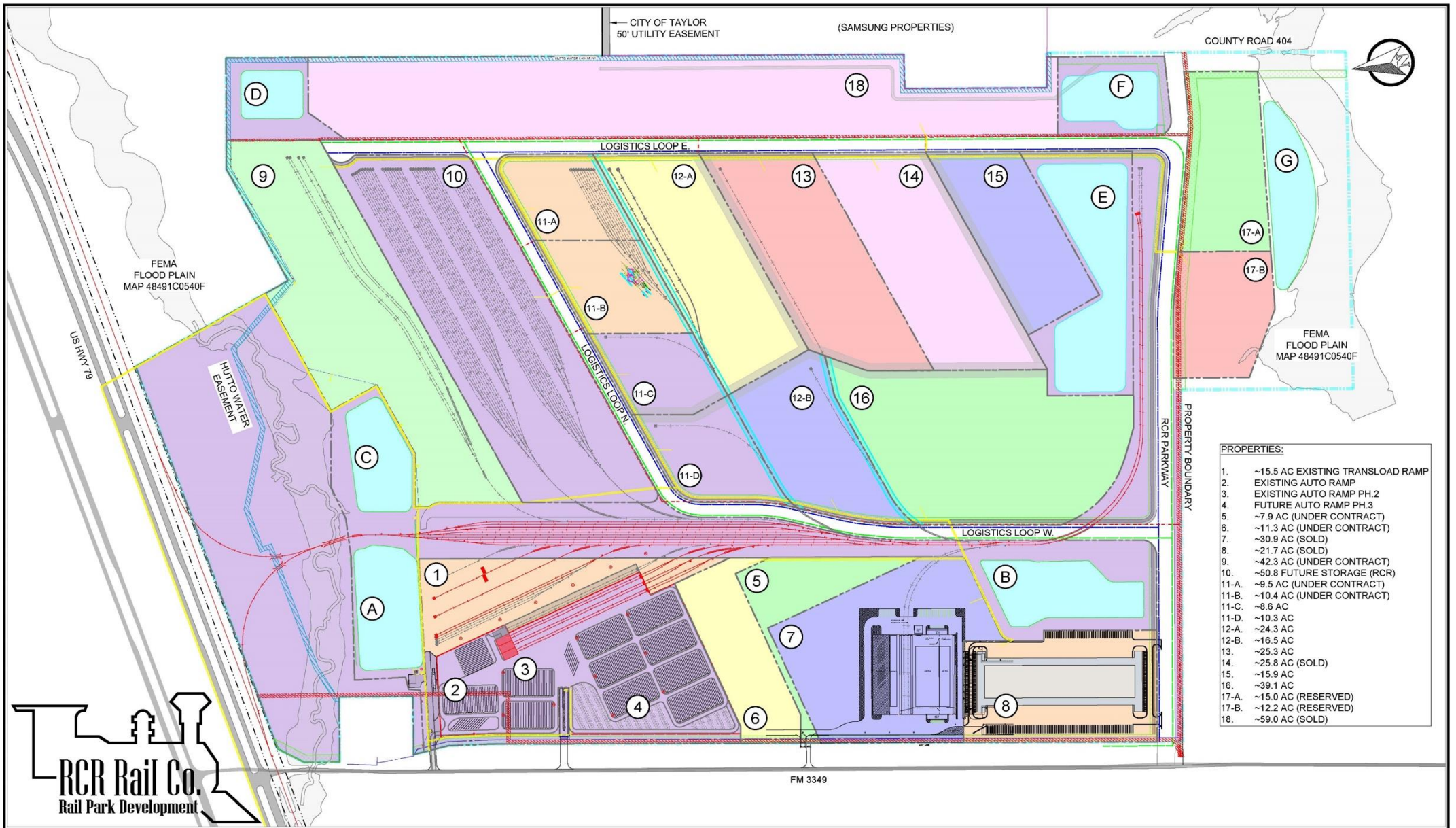


# A Recent Look at RCR Taylor Rail Park





C:\Users\versac\OneDrive\Documents\RTD\74 RCR Taylor\Project Files\0-Design\Text Data\1-TRA\RCR Taylor Base.dwg \* 2/1/2024 1:38 PM \* Plotted by Logan Oreck



<div><div><div><div></div><div>RITD</div></div><div><div>Railroad Infrastructure &amp; Terminal Development, LLC</div><div>35565 COOPER ROAD - P.O. BOX 1087 BROOKSHIRE, TEXAS 77423 (281) 393-4855 WWW.RITD-LLC.COM FIRM F-16264</div></div></div></div>	<div><div><div></div><div>300</div><div>0</div><div>300</div><div>600</div></div><div>REV. DATE BY DESCRIPTION</div><div><table><tr><td> </td><td> </td><td> </td><td> </td></tr><tr><td> </td><td> </td><td> </td><td> </td></tr><tr><td> </td><td> </td><td> </td><td> </td></tr></table></div></div>															<div><div>LEGEND:</div><div><div>EXIST. MAINLINE TRACK</div><div>PROPR. RR OWNED TRACK</div><div>EXIST. IND. OWNED TRACK</div><div>PROPR. IND. OWNED TRACK</div><div>FUTURE IND. OWNED TRACK</div><div>RAILROAD RIGHT OF WAY FENCE</div></div><div><div><div></div></div><div><div></div></div><div><div></div></div><div><div></div></div><div><div></div></div><div><div></div></div></div></div>	<div><div>DATE 02/01/24 CHECK JG DRAWN LQ APPR'D BM</div><div>THIS DRAWING SET WAS CREATED FROM INFORMATION PROVIDED BY OTHERS AND HAS NOT BEEN VERIFIED BY FIELD MEASUREMENTS OR TOPOGRAPHICAL SURVEYS. RAILROAD INFRASTRUCTURE &amp; TERMINAL DEVELOPMENT ASSUMES NO RESPONSIBILITY FOR THE ACCURACY OF THE INFORMATION CONTAINED IN THE DRAWING SET. USE OF ANY PORTION OF THIS DRAWING CONSTITUTES ACCEPTANCE OF THE TERMS &amp; CONDITIONS OF RAILROAD INFRASTRUCTURE &amp; TERMINAL DEVELOPMENT, LLC.</div></div>	<div><div><div></div><div>RITD</div></div><div><div>Railroad Infrastructure &amp; Terminal Development, LLC</div></div></div>	<div><div>LOCATION AND DESCRIPTION:</div><div>MP 148.63, AUSTIN SUBDIVISION TAYLOR, WILLIAMSON COUNTY, TEXAS</div></div>	<div><div>RCR TAYLOR RAIL, L.P. TAYLOR, WILLIAMSON COUNTY, TX</div><div><div>SITE DEVELOPMENT PLAN RCR TAYLOR LOGISTICS PARK FULL SITE OVERVIEW</div></div></div>	<div>EX-B</div> <div>0250, # 471</div>





**RCR Rail Co.**

**Rail Park Development**